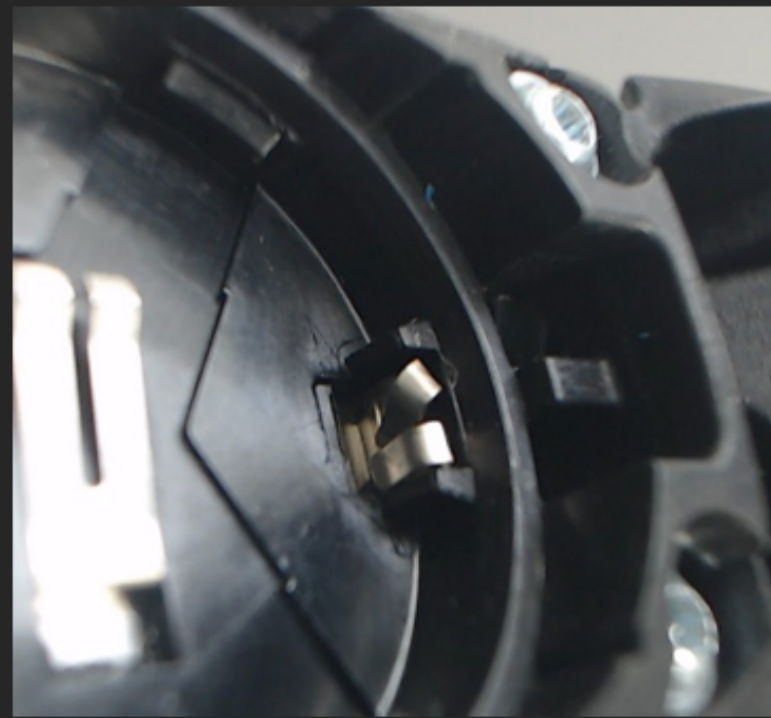


If one or both positive contacts are out of adjustment (shown in reference A), use a fine point pick to gently adjust them back into place (shown in reference B).

Incorrect positive contact (Reference A)

Correct positive contact (Reference B)



The positive contacts can also compress inward (shown in reference D) preventing connection to the CR2032 battery.

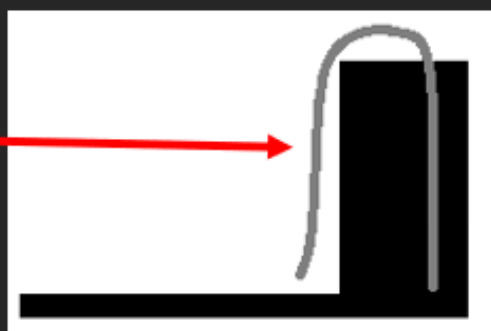
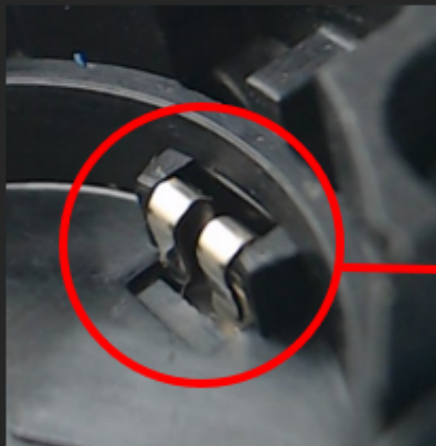
Positive contact reference image

Correct (Reference C)

Incorrect (Reference D)

Positive contact in the correct position and clearing compartment wall .

Positive contact is compressed and does not clear compartment wall. Outward adjustment is required to achieve proper contact to battery.



If one or both positive contacts are out of adjustment (shown in reference C), use a fine point pick or a razor blade to pry them outward gently (shown in reference D).